

TECHNICAL DATA SHEET



Product Code: E61001

Product Description: COLEBRIDGE-Two-handle monobloc basin mixer

Product Specification

Material:

Solid brass with a duraglean chrome finish

Fittings:

Single stud fixing kit

Systems:

Suitable for high and low pressure systems

Suitable for Gravity fed systems

Suitable for Unvented systems

Suitable for Combi boilers

Additional Information

Always inspect before installation

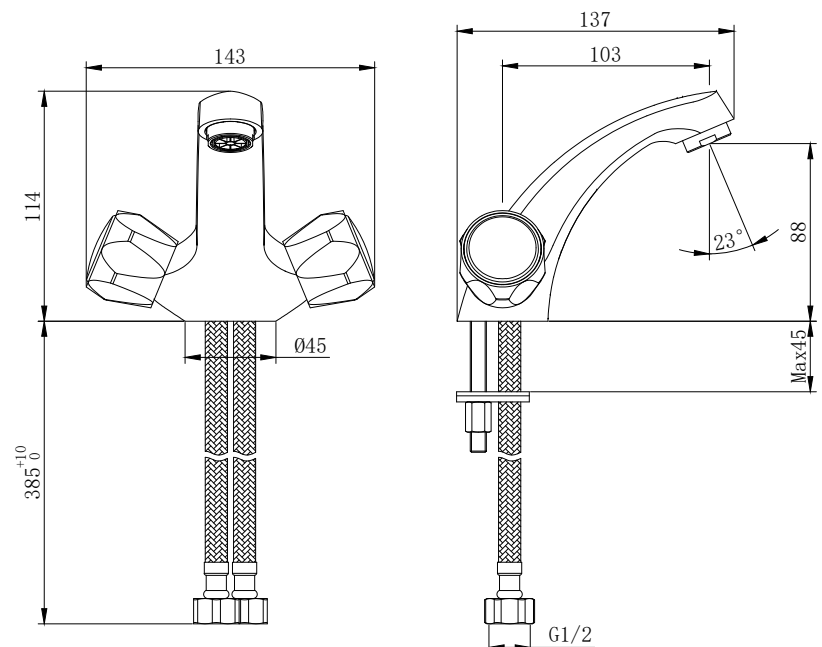
Do not clean with abrasive cleaning products

WRAS approved

Dual handles



Pressure(bar)	Flow Rate(L/min)
0.3	13.3
0.5	18.6
1	26.5
2	38.3
3	47.4
4	55
5	62



TECHNICAL DATA SHEET



Product Code: E61003

Product Description: COLEBRIDGE-Pair bath taps (3/4")

Product Specification

Material:

Solid brass with a duraglean chrome finish

Fittings:

Metal Back nuts

Systems:

Suitable for high and low pressure systems

Suitable for Gravity fed systems

Suitable for Unvented systems

Suitable for Combi boilers

Additional Information

Always inspect before installation

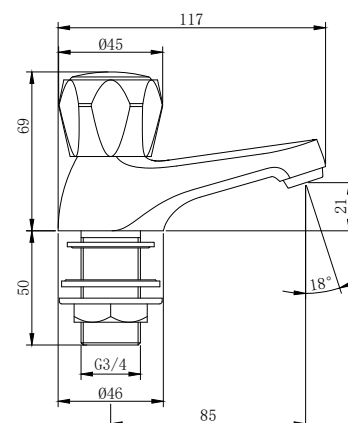
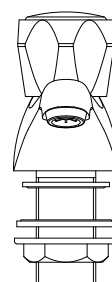
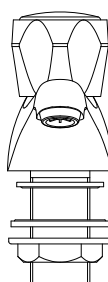
Do not clean with abrasive cleaning products

WRAS approved

Dual handles



Pressure(bar)	Flow Rate(L/min)
0.3	14
0.5	18.2
1	26.1
2	37.3
3	46.2
4	53
5	60.2



TECHNICAL DATA SHEET



Product Code: E61004

Product Description: COLEBRIDGE-Pair basin taps (1/2")

Product Specification

Material:

Solid brass with a duraglean chrome finish

Fittings:

Metal Back nuts

Systems:

Suitable for high and low pressure systems

Suitable for Gravity fed systems

Suitable for Unvented systems

Suitable for Combi boilers

Additional Information

Always inspect before installation

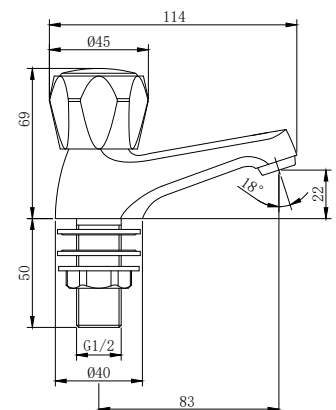
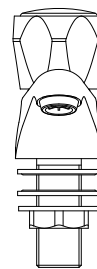
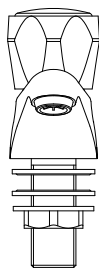
Do not clean with abrasive cleaning products

WRAS approved

Dual handles



Pressure(bar)	Flow Rate(L/min)
0.3	14
0.5	18.2
1	26.1
2	37.3
3	46.2
4	53
5	60.2



TECHNICAL DATA SHEET



Product Code: E61005

Product Description:COLEBRIDGE-Two-handle bath mixer

Product Specification

Material:
Solid brass with a duraglead chrome finish

Fittings:
Metal Back nuts

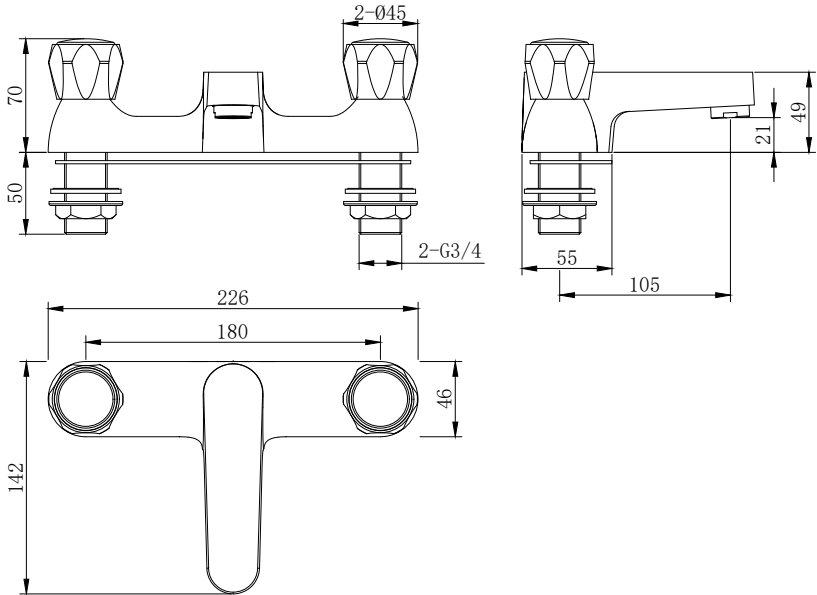
Systems:
Suitable for high and low pressure systems
Suitable for Gravity fed systems
Suitable for Unvented systems
Suitable for Combi boilers

Additional Information

- Always inspect before installation
- Do not clean with abrasive cleaning products
- WRAS approved
- Dual handles



Pressure(bar)	Flow Rate(L/min)
0.3	11.4
0.5	16.4
1	24.3
2	35.2
3	39.2
4	51
5	58.6



The information contained within this specification sheet is believed to be correct and complete at the time of creation. All photographs / drawings are as a guide only and do not necessarily represent the products available. The UK Plumbing Supplies Ltd reserves the right to change product details and price without prior notice.

TECHNICAL DATA SHEET



Product Code: E61007

Product Description: COLEBRIDGE-Pair basin taps (1/2")

Product Specification

Material:

Solid brass with a duraglead chrome finish

Fittings:

Metal Back nuts

Systems:

Suitable for high and low pressure systems

Suitable for Gravity fed systems

Suitable for Unvented systems

Suitable for Combi boilers

Additional Information

Always inspect before installation

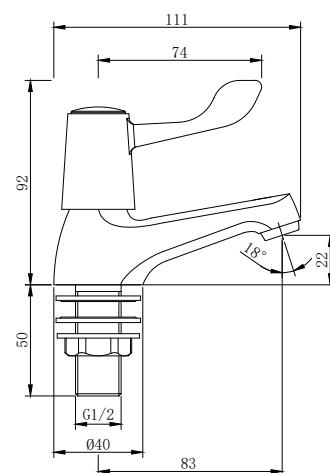
Do not clean with abrasive cleaning products

WRAS approved

Lever style handles for ease of use



Pressure(bar)	Flow Rate(L/min)
0.3	10.4
0.5	13.6
1	19.6
2	28
3	34.5
4	40
5	45



TECHNICAL DATA SHEET



Product Code: E61008

Product Description: COLEBRIDGE-Pair bath taps (3/4")

Product Specification

Material:

Solid brass with a duraglead chrome finish

Fittings:

Metal Back nuts

Systems:

Suitable for high and low pressure systems

Suitable for Gravity fed systems

Suitable for Unvented systems

Suitable for Combi boilers

Additional Information

Always inspect before installation

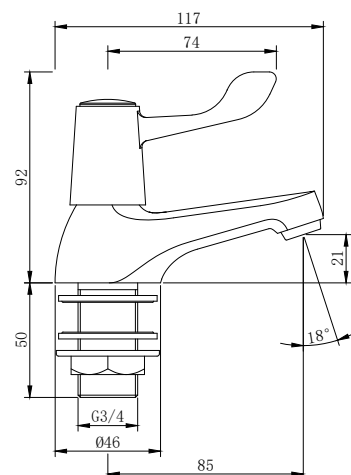
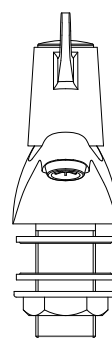
Do not clean with abrasive cleaning products

WRAS approved

Lever style handles for ease of use



Pressure(bar)	Flow Rate(L/min)
0.3	10.4
0.5	13.6
1	19.6
2	28
3	34.5
4	40
5	45



TECHNICAL DATA SHEET



Product Code: E61012

Product Description: COLEBRIDGE-Two-handle monobloc basin

Product Specification

Material:

Solid brass with a duraglean chrome finish

Fittings:

Single stud fixing kit

Systems:

Suitable for high and low pressure systems

Suitable for Gravity fed systems

Suitable for Unvented systems

Suitable for Combi boilers

Additional Information

Always inspect before installation

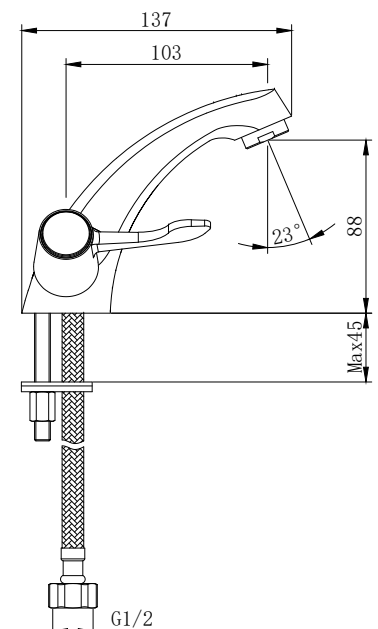
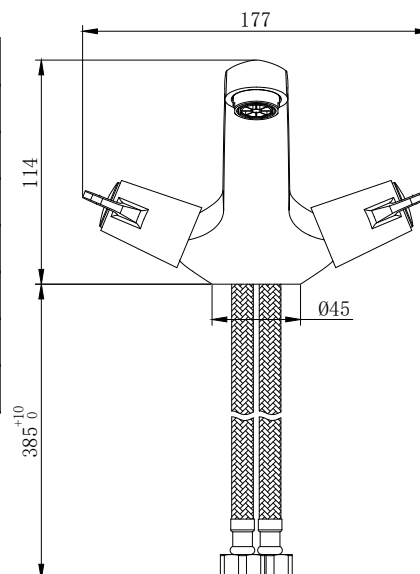
Do not clean with abrasive cleaning products

WRAS approved

Lever style handles for ease of use



Pressure(bar)	Flow Rate(L/min)
0.3	9.6
0.5	13.6
1	19.5
2	28
3	34.6
4	40.2
5	45



TECHNICAL DATA SHEET



Product Code: E61021

Product Description:COLEBRIDGE-Non-concussive pair basin taps

Product Specification

Material:
Solid brass with a durable chrome finish

Fittings:
Metal Back nuts

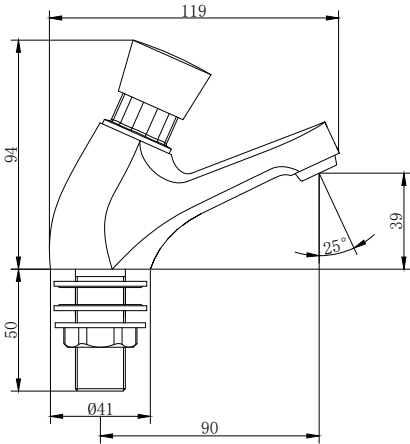
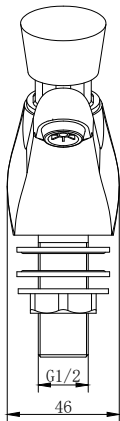
Systems:
Suitable for high and low pressure systems
Suitable for Gravity fed systems
Suitable for Unvented systems
Suitable for Combi boilers

Additional Information

- Always inspect before installation
- Do not clean with abrasive cleaning products
- WRAS approved
- Non -concussive valve to save water



Pressure(bar)	Flow Rate(L/min)
0.3	/
0.5	6
1	8.4
2	9.6
3	9.6
4	10.8
5	10.8



The information contained within this specification sheet is believed to be correct and complete at the time of creation. All photographs / drawings are as a guide only and do not necessarily represent the products available. The UK Plumbing Supplies Ltd reserves the right to change product details and price without prior notice.