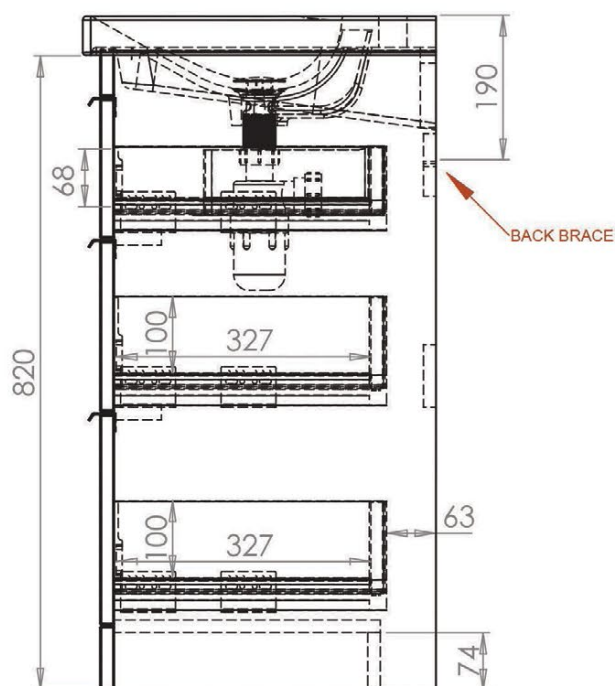
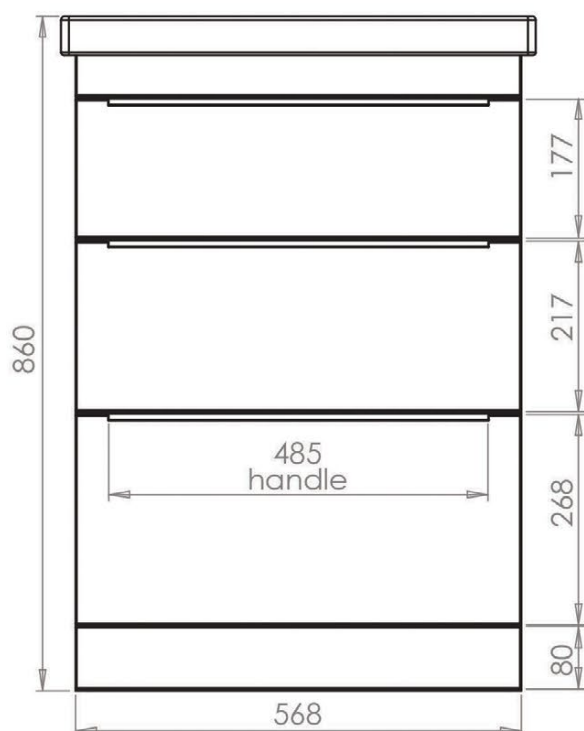


No.	Description
1	600mm Ceramic Basin
2	600mm 3 Drawers Floor Mounted Unit

FINISHES	
	
White	Stone Grey
	
Light Grey	Basalt Wood



Diagrams not to scale. All dimensions in mm (tolerance of +/-5mm)



*Dimensions are subject to change, customers are advised to measure actual product before commencing installation.

**Fixing point dimensions are for guidance only. The positions of wall fixing must be checked when product is received.

FAQ's

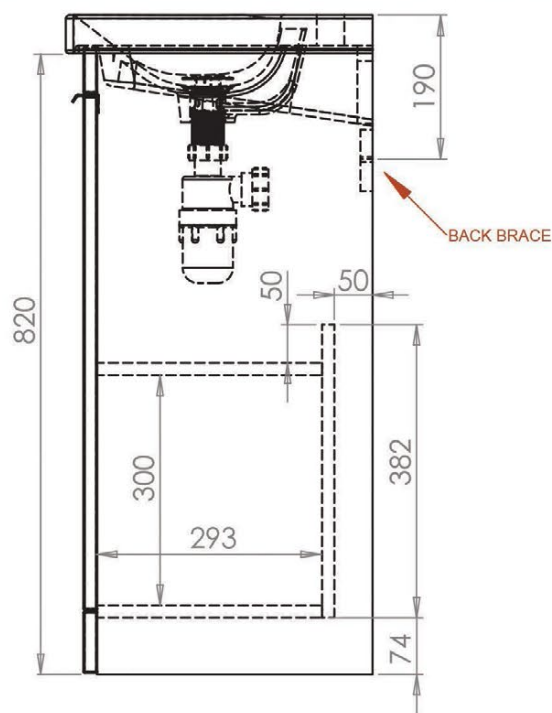
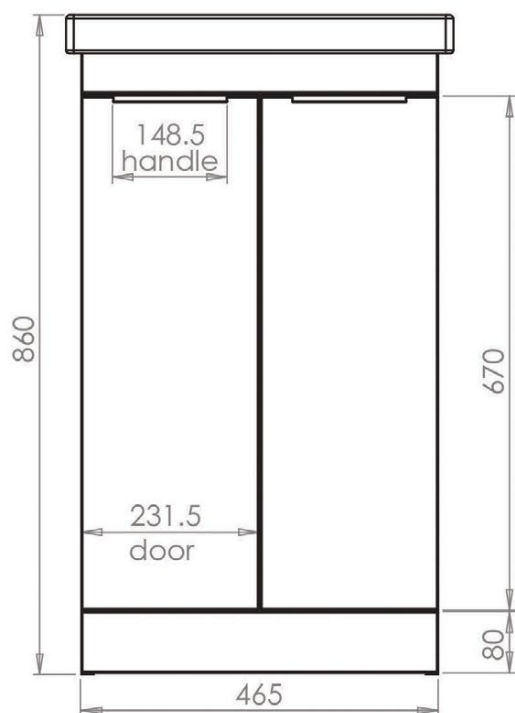
- How big is the plumbing void at the back of the furniture unit? **63mm**
- Can the drawers be adjusted? **The drawers of the unit can be adjusted as detailed in the supplied instructions**
- Are the runners soft close? **Yes**
- How deep is the unit when the drawers are fully open? **Approx. 720mm deep including handle**
- How do I fix the unit to the wall? **We strongly recommend to secure this unit to the wall drilling through the back brace.**
- Do the handles come installed? **Yes, They are installed.**

No.	Description
1	500mm Ceramic Basin
2	500mm Floor Mounted Unit

FINISHES	
	
White	Stone Grey
	
Light Grey	Basalt Wood



Diagrams not to scale. All dimensions in mm (tolerance of +/-5mm)



*Dimensions are subject to change, customers are advised to measure actual product before commencing installation.

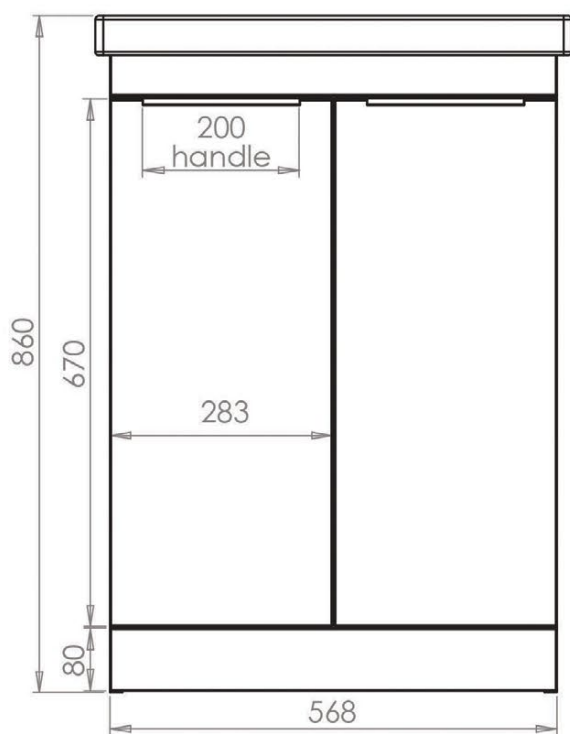
**Fixing point dimensions are for guidance only. The positions of wall fixing must be checked when product is received.

FAQ's

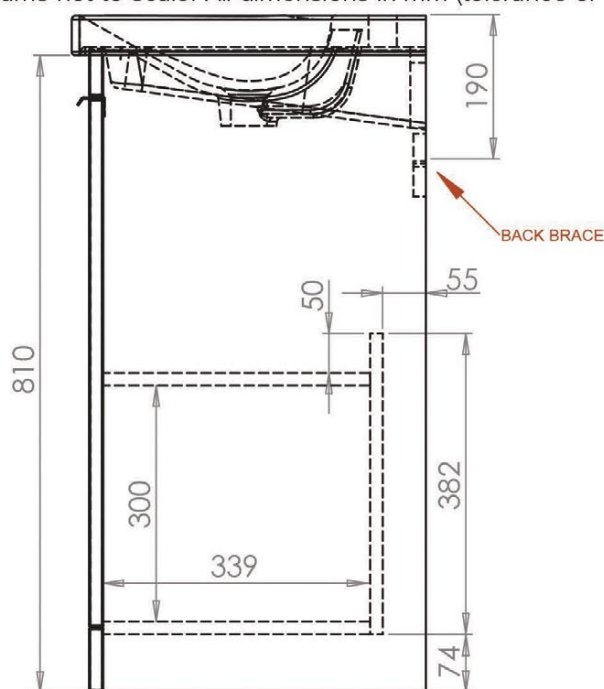
- How big is the plumbing void at the back of the furniture unit? **50mm**
- Can the doors be adjusted? **The doors of the unit can be adjusted as detailed in the supplied instructions**
- Are the hinges soft close? **The hinges are both soft close and quick release**
- How deep is the unit when the doors are fully open? **Approx. 595mm deep including handle (aprox 90 degree opening)**
- How do I fix the unit to the wall? **You can secure it to the wall drilling through the back brace.**
- Is the shelf removable? **No. There is one fixed shelf.**
- Do the handles come installed? **Yes, They are installed.**

No.	Description
1	600mm Ceramic Basin
2	600mm Floor Mounted Unit

FINISHES	
	
White	Stone Grey
	
Light Grey	Basalt Wood



Diagrams not to scale. All dimensions in mm (tolerance of +/-5mm)



*Dimensions are subject to change, customers are advised to measure actual product before commencing installation.

**Fixing point dimensions are for guidance only. The positions of wall fixing must be checked when product is received.

FAQ's

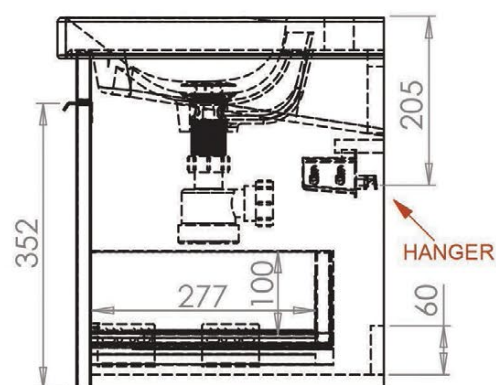
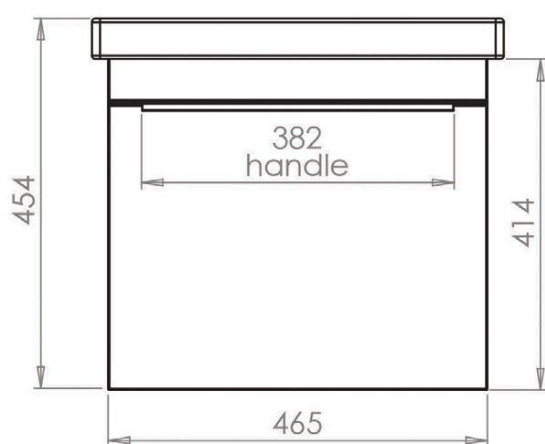
- How big is the plumbing void at the back of the furniture unit? **55mm**
- Can the doors be adjusted? **The doors of the unit can be adjusted as detailed in the supplied instructions**
- Are the hinges soft close? **Yes**
- How deep is the unit when the doors are fully open? **Approx. 685mm deep including handle (approx 90 degree opening)**
- How do I fix the unit to the wall? **You can secure it to the wall drilling through the back brace.**
- Is the shelf removable? **No. There is one fixed shelf.**
- Do the handles come installed? **Yes, They are installed.**

No.	Description
1	500mm Ceramic Basin
2	500mm 1 Drawer Floor Mounted Unit

FINISHES	
	
Gloss White	Stone Grey
	
Gloss Light Grey	Basalt Wood



Diagrams not to scale. All dimensions in mm (tolerance of +/-5mm)



*Dimensions are subject to change, customers are advised to measure actual product before commencing installation.

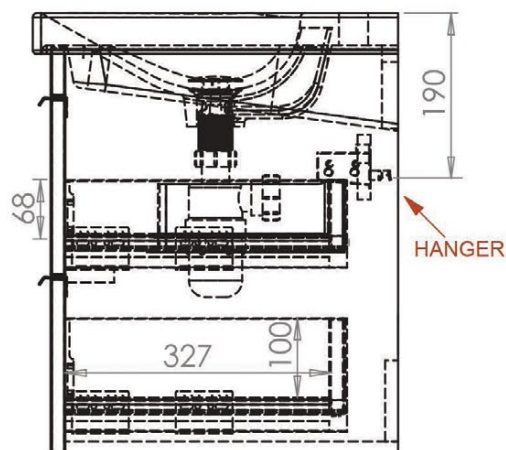
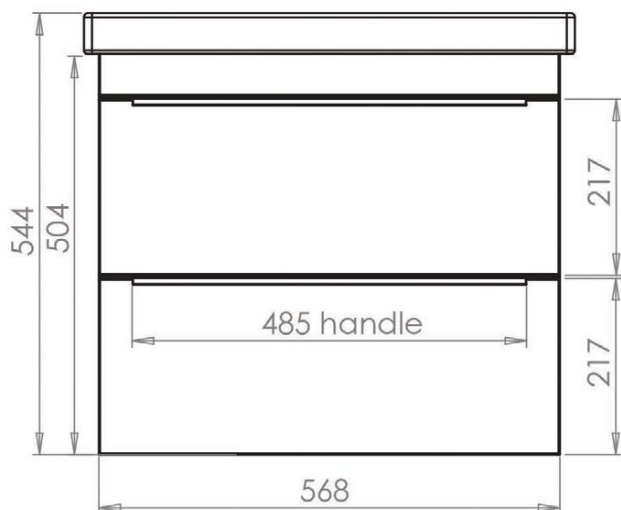
**Fixing point dimensions are for guidance only. The positions of wall fixing must be checked when product is received.

FAQ's

- How big is the plumbing void at the back of the furniture unit? **65mm**
- Can the drawer be adjusted? **The drawers of the unit can be adjusted as detailed in the supplied instructions**
- Are the runners soft close? **Yes**
- How deep is the unit when the drawer is fully open? **Approx. 715mm deep including handle**
- How do I fix the unit to the wall? **There are adjustable wall hangers in the unit and wall plate kit is provided.**
- Do the handles come installed? **Yes, They are installed.**

No.	Description
1	600mm Ceramic Basin
2	600mm 2 Drawers Floor Mounted Unit

FINISHES	
	
Gloss White	Stone Grey
	
Gloss Light Grey	Basalt Wood

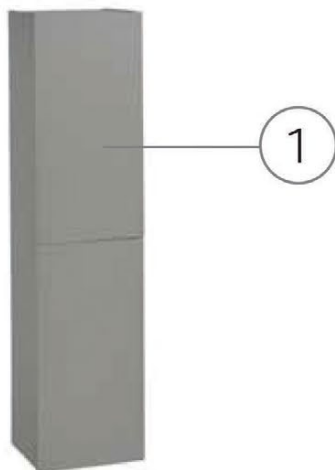


FAQ's

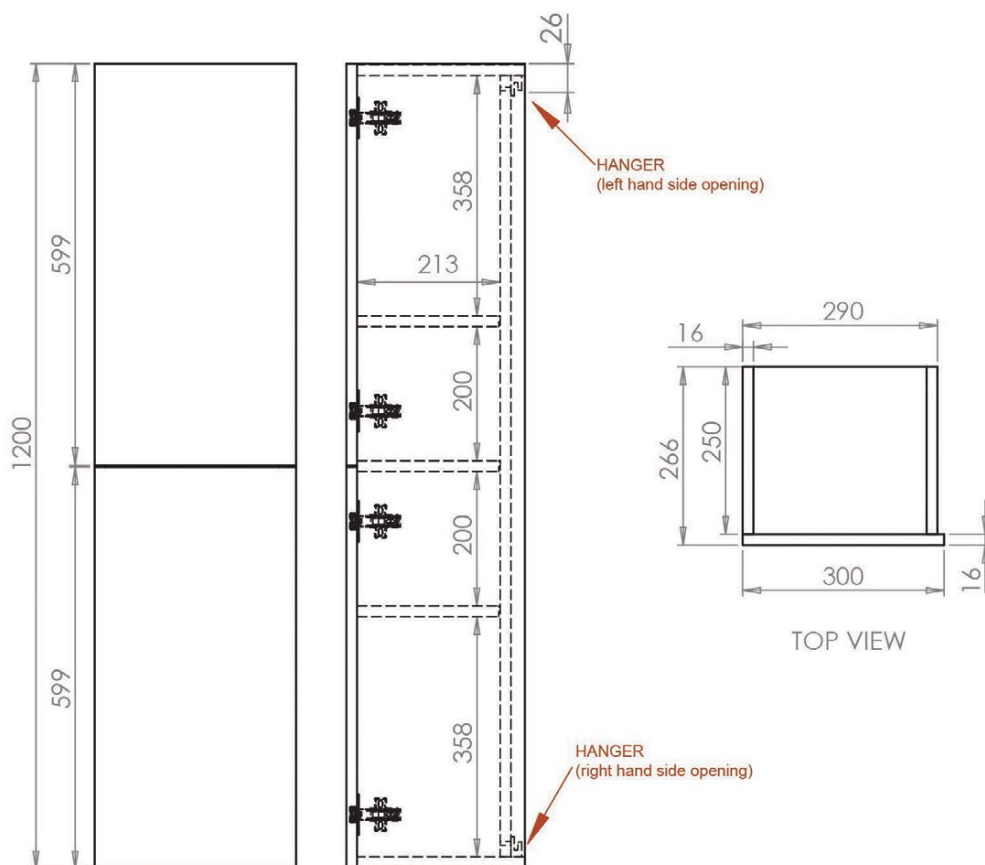
- How big is the plumbing void at the back of the furniture unit? **65mm**
- Can the drawers be adjusted? **The drawers of the unit can be adjusted as detailed in the supplied instructions**
- Are the runners soft close? **Yes**
- How deep is the unit when the drawers are fully open? **Approx. 760mm deep including handle**
- How do I fix the unit to the wall? **There are adjustable wall hangers in the unit and wall plate kit is provided.**
- Do the handles come installed? **Yes, They are installed.**

No.	Description
1	Column

FINISHES	
	
White	Stone Grey
	
Light Grey	Basalt Wood



Diagrams not to scale. All dimensions in mm (tolerance of +/-5mm)



*Dimensions are subject to change, customers are advised to measure actual product before commencing installation.

**Fixing point dimensions are for guidance only. The positions of wall fixing must be checked when product is received.

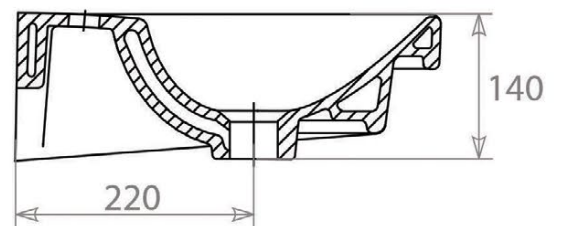
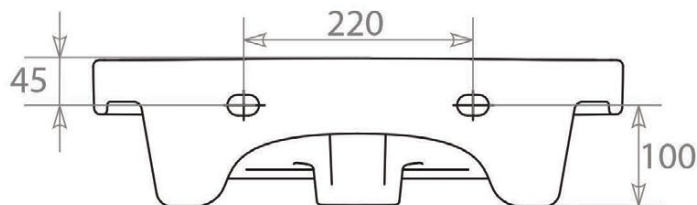
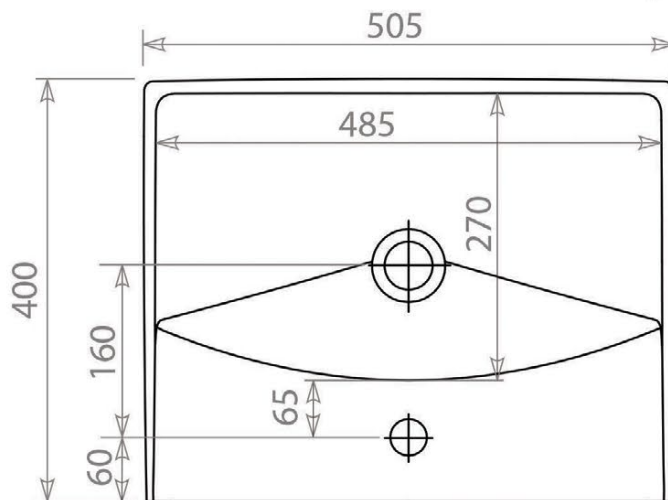
FAQ's

- Can the doors be adjusted? **The doors of the unit can be adjusted as detailed in the supplied instructions**
- Are the hinges soft close? **Yes**
- Is the unit reversible? **Yes, there are hangers on the top and bottom to reverse the unit. See instructions.**
- How do I fix the unit to the wall? **Wall brackets are supplied with the unit. See instructions.**
- How deep is the unit when the doors are fully open? **Approx. 550mm deep (approx 90 degree opening)**
- Are the shelves removable? **No. There are two fixed shelves.**

No.	Description
1	500mm Basin



Diagrams not to scale. All dimensions in mm (tolerance of +/-5mm)



*Dimensions are subject to change, customers are advised to measure actual product before commencing installation.

**Fixing point dimensions are for guidance only. The positions of wall fixing must be checked when product is received.

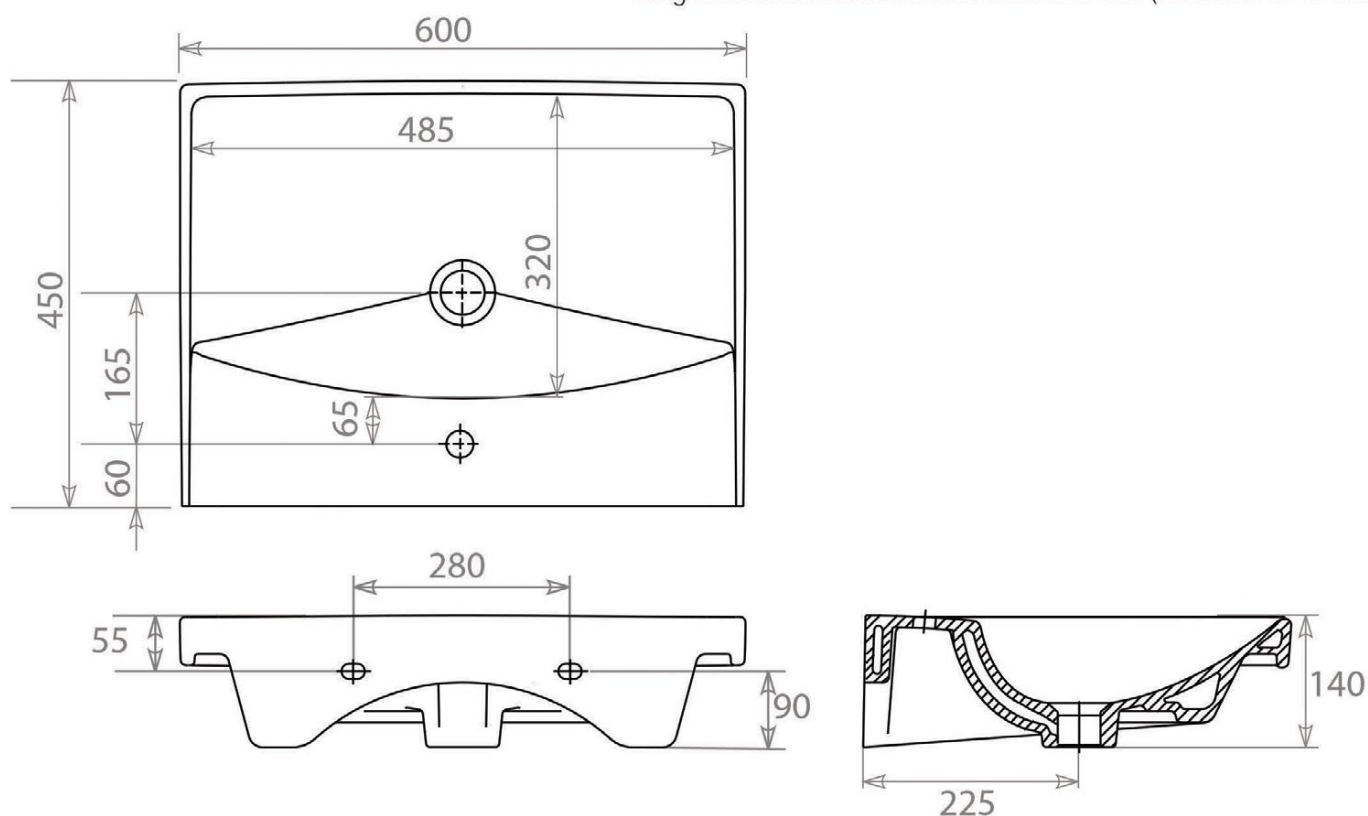
FAQ's

- What is the maximum water depth of the basin? **60mm (up to overflow)**
- Does the basin have an overflow? **Yes, Integrated.**

No.	Description
1	600mm Basin



Diagrams not to scale. All dimensions in mm (tolerance of +/-5mm)



*Dimensions are subject to change, customers are advised to measure actual product before commencing installation.

**Fixing point dimensions are for guidance only. The positions of wall fixing must be checked when product is received.

FAQ's

- What is the maximum water depth of the basin? **60mm (up to overflow)**
- Does the basin have an overflow? **Yes, Integrated.**