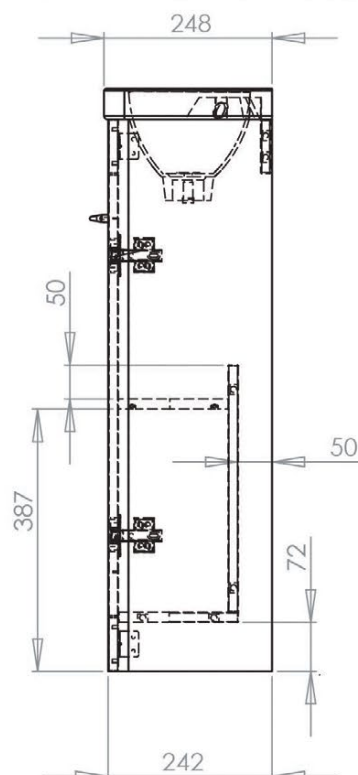
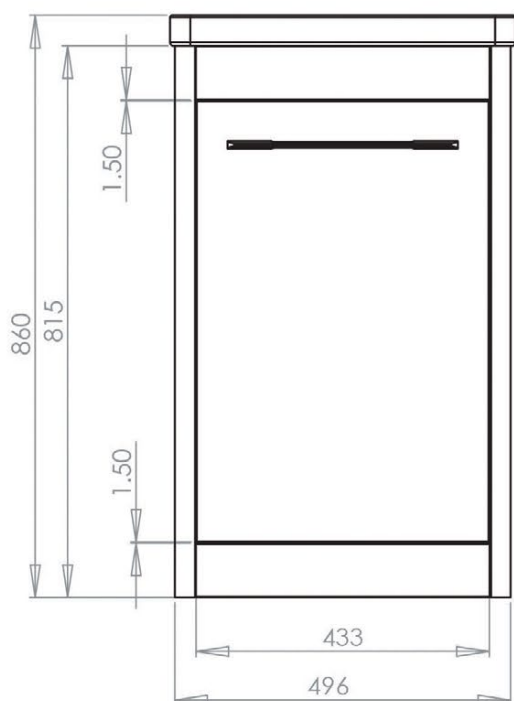


No.	Description
1	500mm Cloakroom Basin
2	500mm Cloakroom Unit

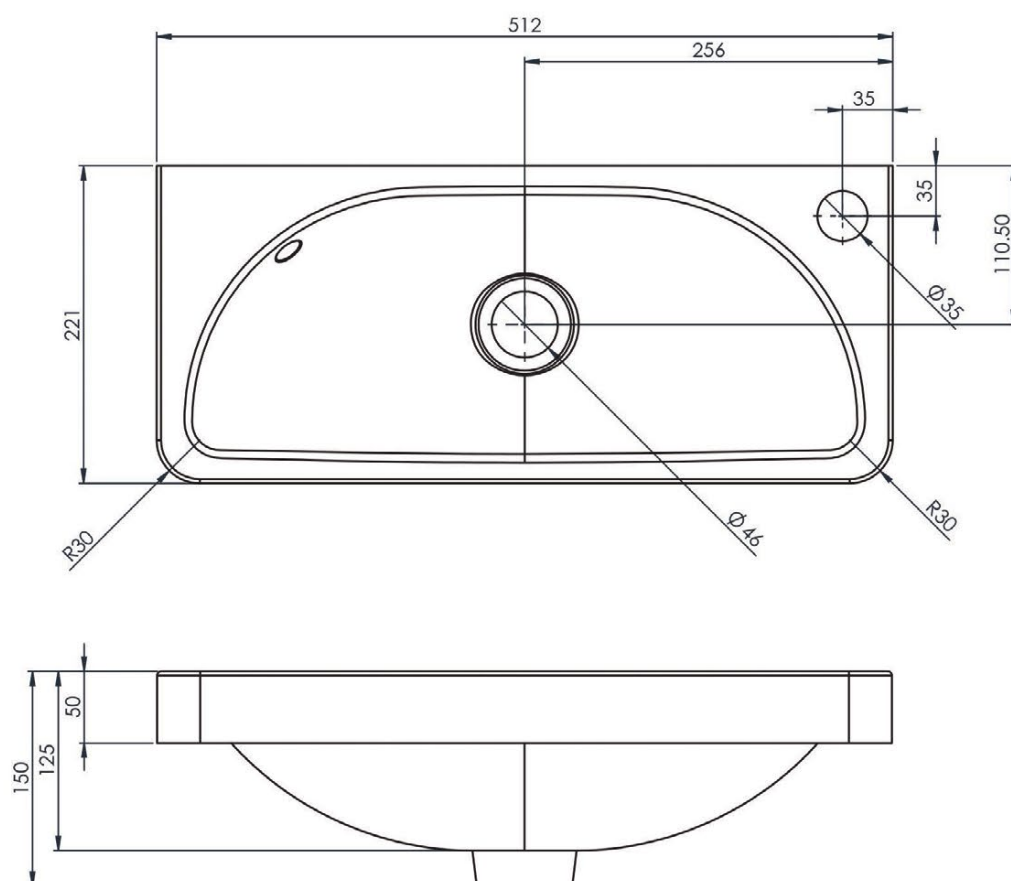


DIAGRAMS NOT TO SCALE
ALL DIMENSIONS IN MM
TOLERANCE OF ± 5 MM

FAQ's

- How big is the plumbing void at the back of the furniture unit? 50mm
- How far apart are the hole centres for the handles? 320mm, (comes with pilot holes)
- Can the doors be adjusted? The doors of the unit can be adjusted as detailed in the supplied instructions
- Are the hinges soft close? The hinges are both soft close and quick release
- How deep is the unit when the doors are fully open? Approx. 710mm
- What is the interior finish of the unit? The unit interior is the same finish as the exterior
- Is the door reversible? Yes, there are fixings on both sides of the cabinet
- Is the shelf removable? Yes it is

No.	Description
1	500mm Cloakroom Basin

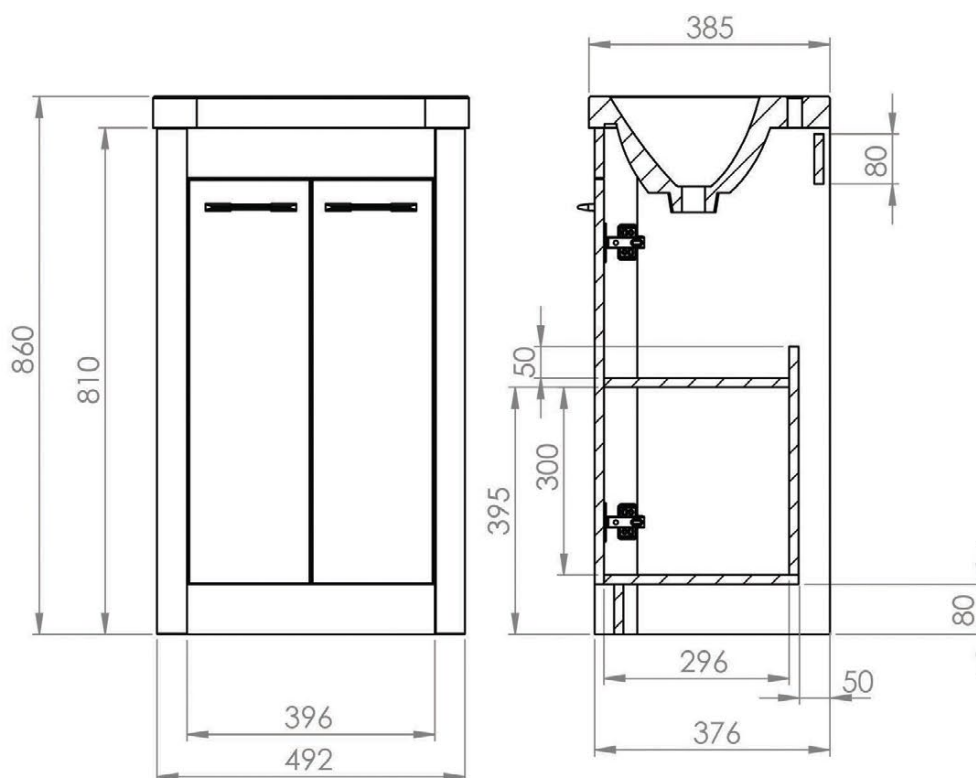


DIAGRAMS NOT TO SCALE
ALL DIMENSIONS IN MM
TOLERANCE OF ± 5 MM

FAQ's

- What is the maximum water depth of the basin? 82mm
- Does the basin have an overflow? Yes, Integrated.

No.	Description
1	500mm Freestanding Unit
2	500mm Ceramic Basin

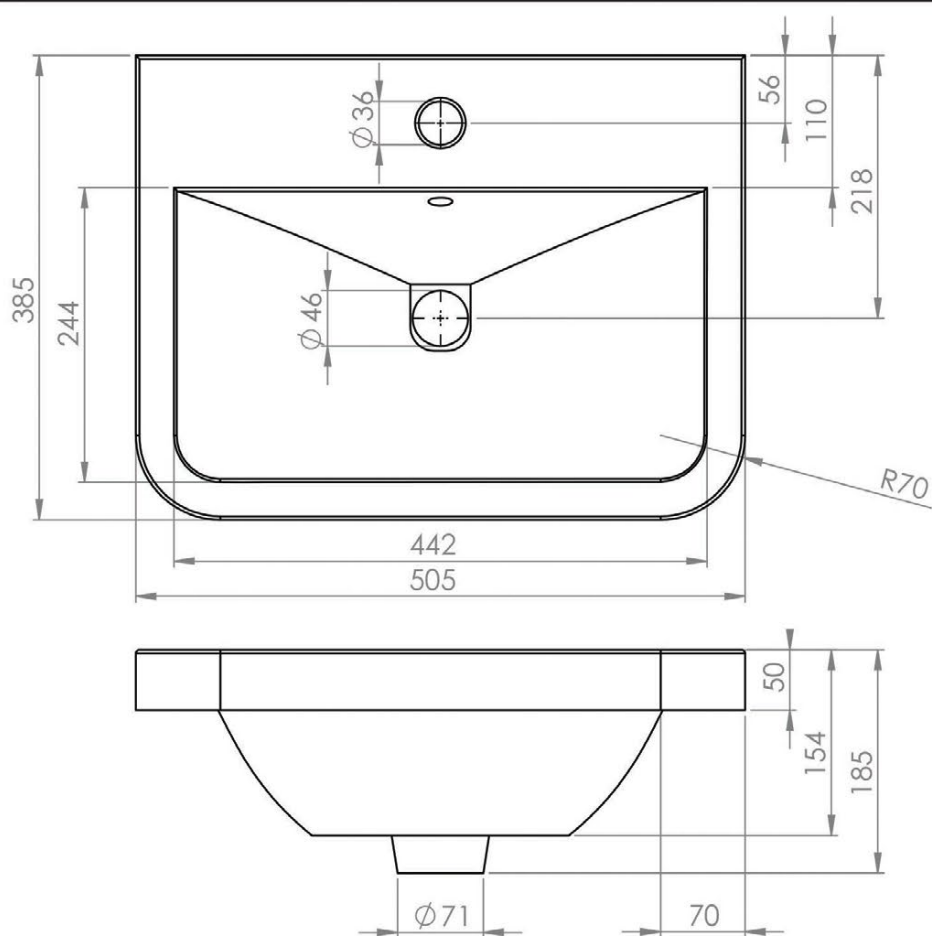


DIAGRAMS NOT TO SCALE
ALL DIMENSIONS IN MM
TOLERANCE OF ± 5 MM

FAQ's

- How big is the plumbing void at the back of the furniture unit? 50mm
- How far apart are the hole centres for the handles? 96mm, they are pre-drilled.
- Can the doors be adjusted? The doors of the unit can be adjusted as detailed in the supplied instructions
- Are the hinges soft close? The hinges are soft close
- How deep is the unit when the doors are fully open? Approx. 570mm
- Is the shelf removable? No.

No.	Description
1	500mm Ceramic Basin

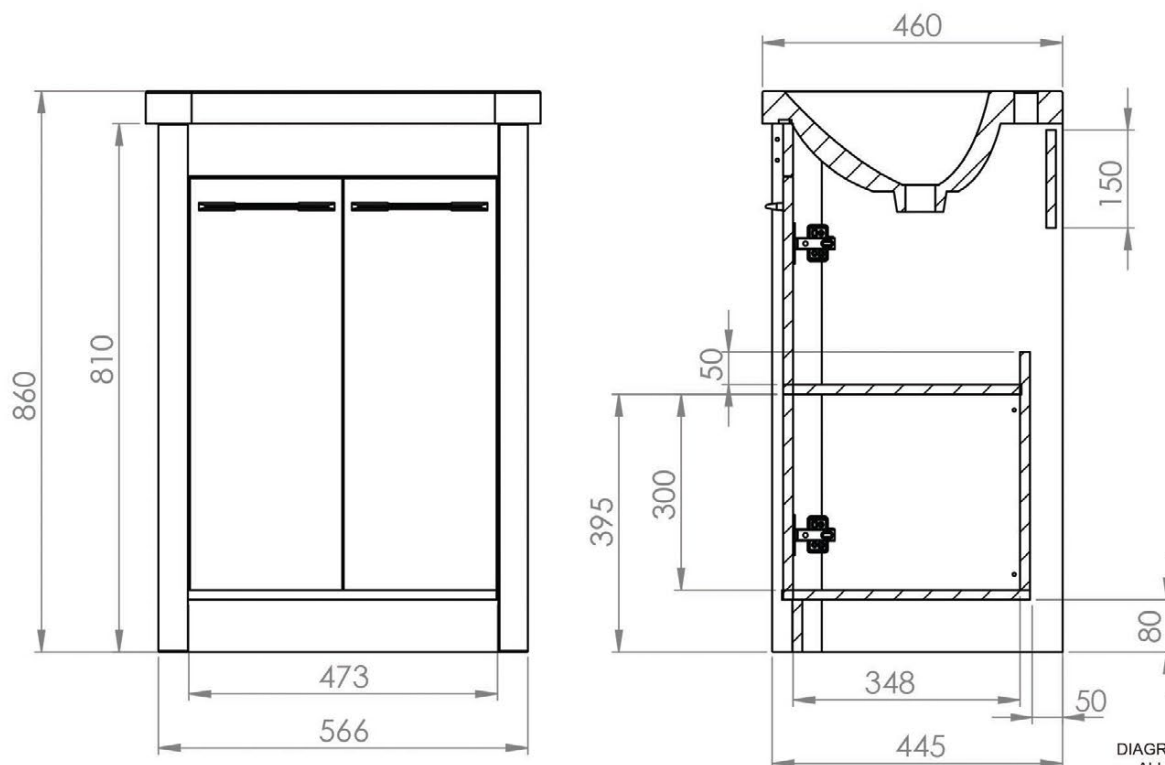


DIAGRAMS NOT TO SCALE
ALL DIMENSIONS IN MM
TOLERANCE OF ± 5 MM

FAQ's

- What is the maximum water depth of the basin? 100mm
- Does the basin have an overflow? Yes, Integrated.

No.	Description
1	600mm Ceramic Basin
2	600mm Freestanding Unit

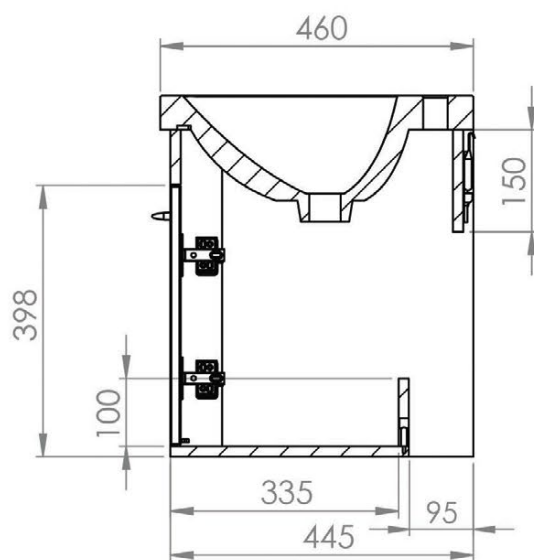
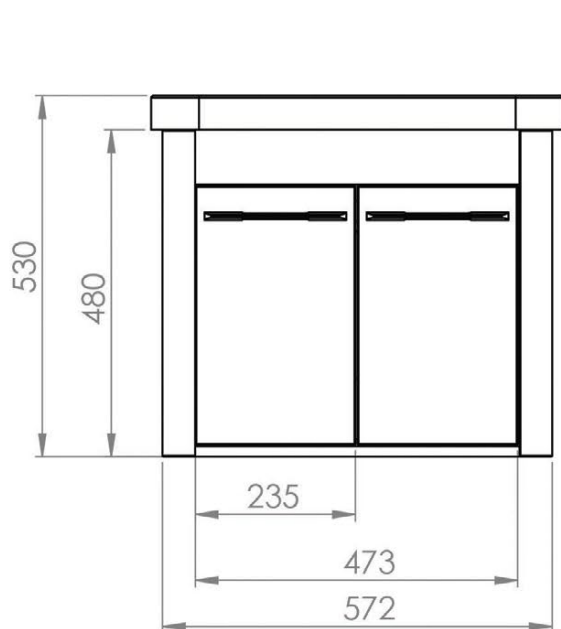


DIAGRAMS NOT TO SCALE
ALL DIMENSIONS IN MM
TOLERANCE OF ± 5 MM

FAQ's

- How big is the plumbing void at the back of the furniture unit? 50mm
- How far apart are the hole centres for the handles? 160mm, they come pre-drilled.
- Can the doors be adjusted? The doors of the unit can be adjusted as detailed in the supplied instructions
- Are the hinges soft close? The hinges are soft close
- How deep is the unit when the doors are fully open? Approx. 690mm
- Is the shelf removable? No.

No.	Description
1	600mm Ceramic Basin
2	600mm Wall Mounted Unit

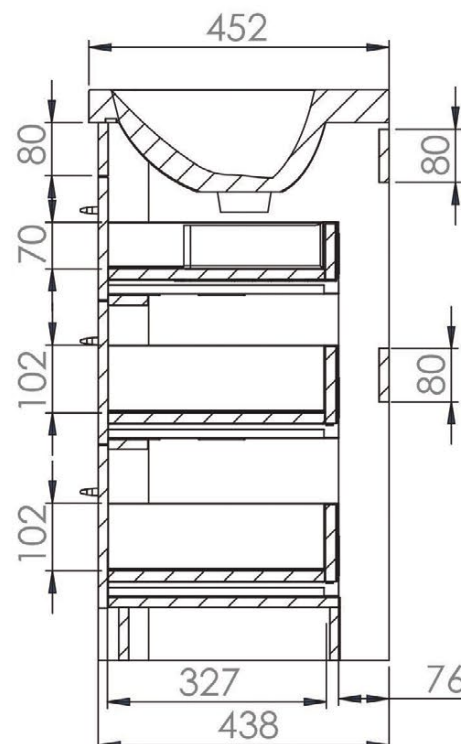
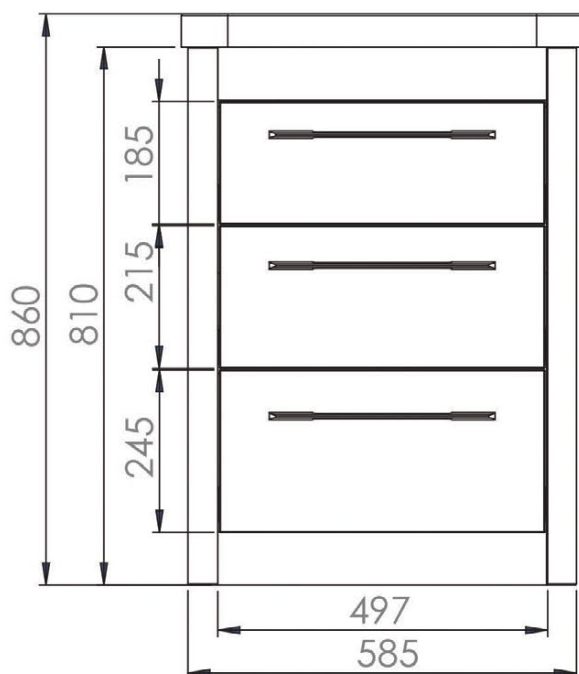


DIAGRAMS NOT TO SCALE
ALL DIMENSIONS IN MM
TOLERANCE OF ± 5 MM

FAQ's

- How big is the plumbing void at the back of the furniture unit? **95mm**
- How far apart are the hole centres for the handles? **160mm**, they come pre-drilled.
- Can the doors be adjusted? **The doors of the unit can be adjusted as detailed in the supplied instructions**
- Are the hinges soft close? **The hinges are both soft close and quick release**
- How deep is the unit when the doors are fully open? **Approx. 685mm**
- How do I fix the unit to the wall? **There are adjustable wall hangers in the unit.**

No.	Description
1	600mm Ceramic Basin
2	600mm 3 Drawer Floor Mounted Unit

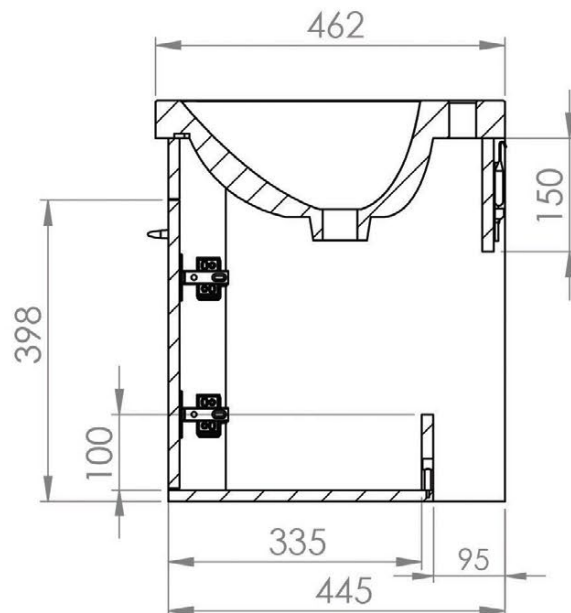
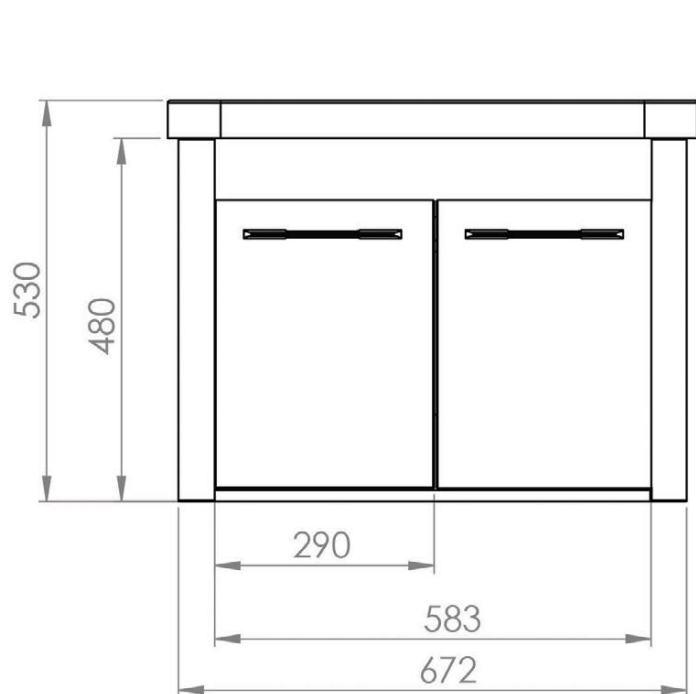


DIAGRAMS NOT TO SCALE
ALL DIMENSIONS IN MM
TOLERANCE OF ± 5 MM

FAQ's

- How big is the plumbing void at the back of the furniture unit? **76mm**
- How far apart are the hole centres for the handles? **320mm (Hole are pre drilled)**
- Can the drawers be adjusted? **The drawers of the unit can be adjusted as detailed in the supplied instructions**
- Are the drawers soft close? **The drawers are all soft close**
- How deep is the unit when the drawers are fully open? **Approx. 798mm**
- What is the internal depth of the drawers? **Approx. 327mm**

No.	Description
1	600mm Ceramic Basin
2	600mm Wall Mounted Unit

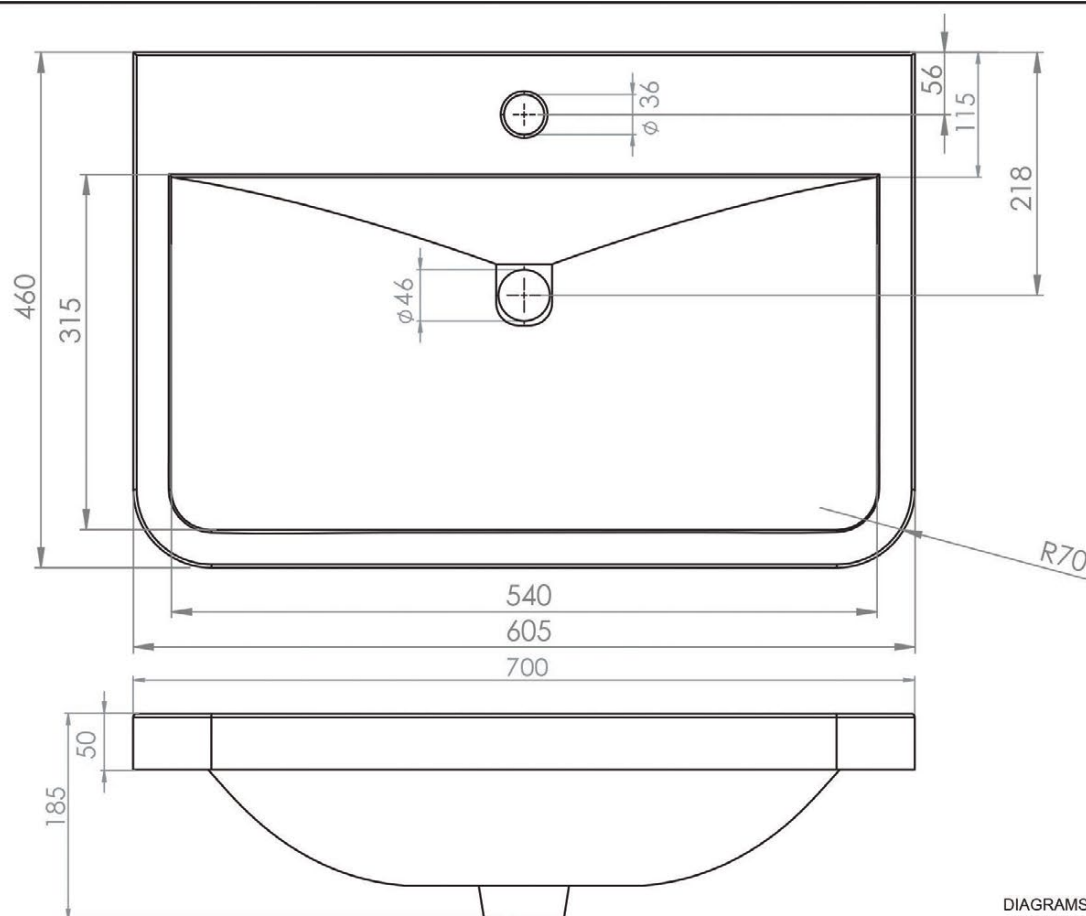


DIAGRAMS NOT TO SCALE
ALL DIMENSIONS IN MM
TOLERANCE OF ± 5 MM

FAQ's

- How big is the plumbing void at the back of the furniture unit? 95mm
- How far apart are the hole centres for the handles? 160mm
- Can the doors be adjusted? The doors of the unit can be adjusted as detailed in the supplied instructions
- Are the hinges soft close? The hinges are both soft close and quick release
- How deep is the unit when the doors are fully open? Approx. 735mm
- How do I fix the unit to the wall? There are adjustable wall hangers in the unit.

No.	Description
1	600mm Basin

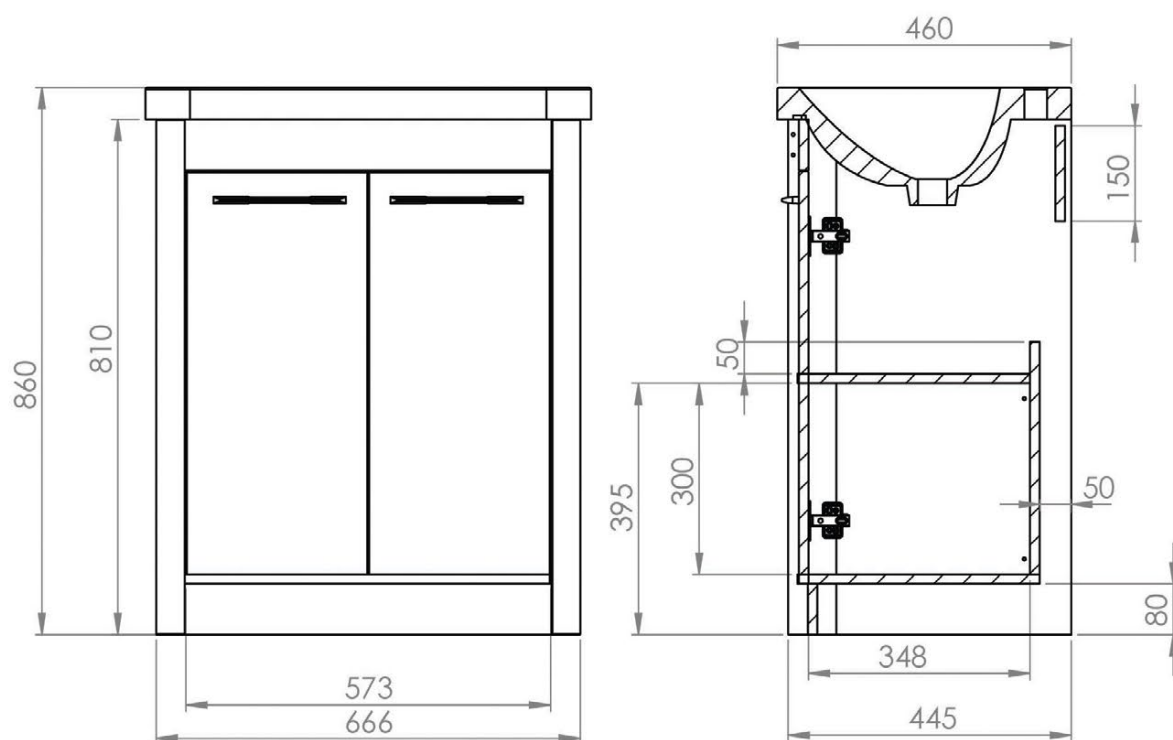


DIAGRAMS NOT TO SCALE
ALL DIMENSIONS IN MM
TOLERANCE OF ± 5 MM

FAQ's

- What is the maximum water depth of the basin? 100mm
- Does the basin have an overflow? Yes, Integrated.

No.	Description
1	700mm Ceramic Basin
2	700mm Freestanding Unit

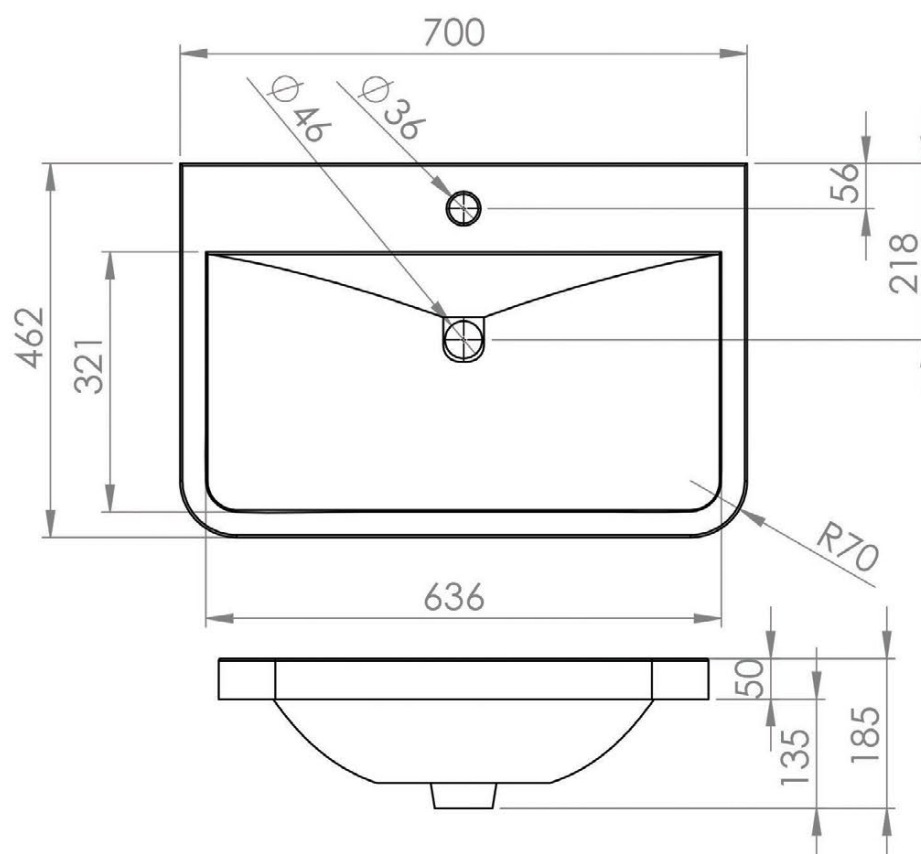


DIAGRAMS NOT TO SCALE
ALL DIMENSIONS IN MM
TOLERANCE OF ± 5 MM

FAQ's

- How big is the plumbing void at the back of the furniture unit? 50mm
- How far apart are the hole centres for the handles? 160mm, they come pre-drilled.
- Can the doors be adjusted? The doors of the unit can be adjusted as detailed in the supplied instructions
- Are the hinges soft close? The hinges are both soft close and quick release
- How deep is the unit when the doors are fully open? Approx. 740mm
- Is the shelf removable? No.

No.	Description
1	700mm Basin

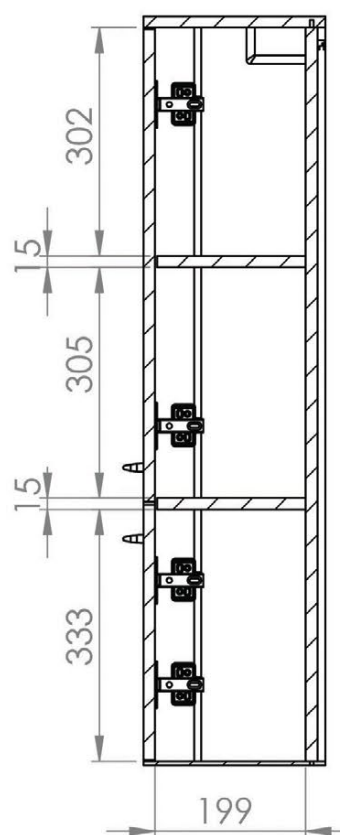
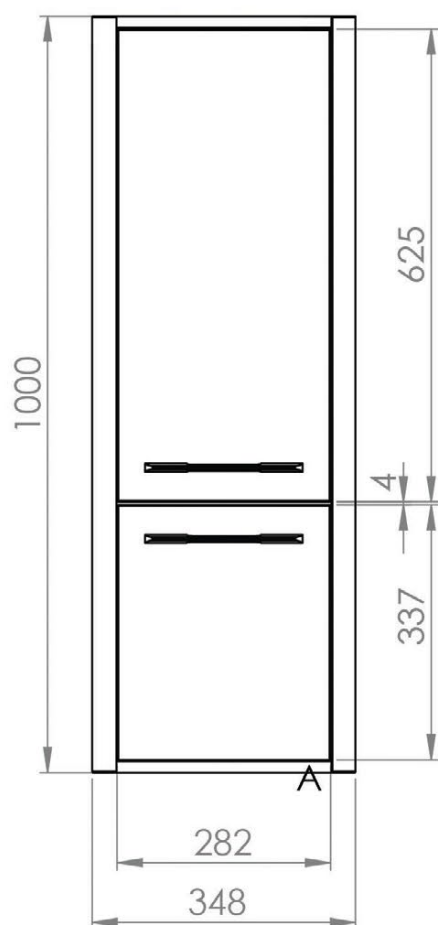


DIAGRAMS NOT TO SCALE
ALL DIMENSIONS IN MM
TOLERANCE OF ± 5 MM

FAQ's

- What is the maximum water depth of the basin? 140mm
- Does the basin have an overflow? Yes, Integrated.

No.	Description
1	350mm Column

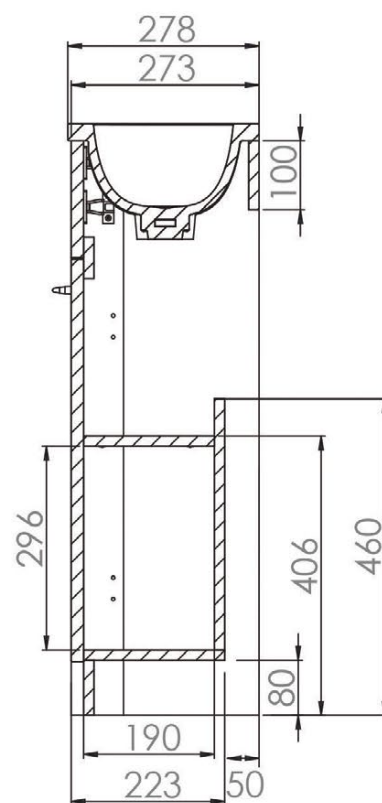
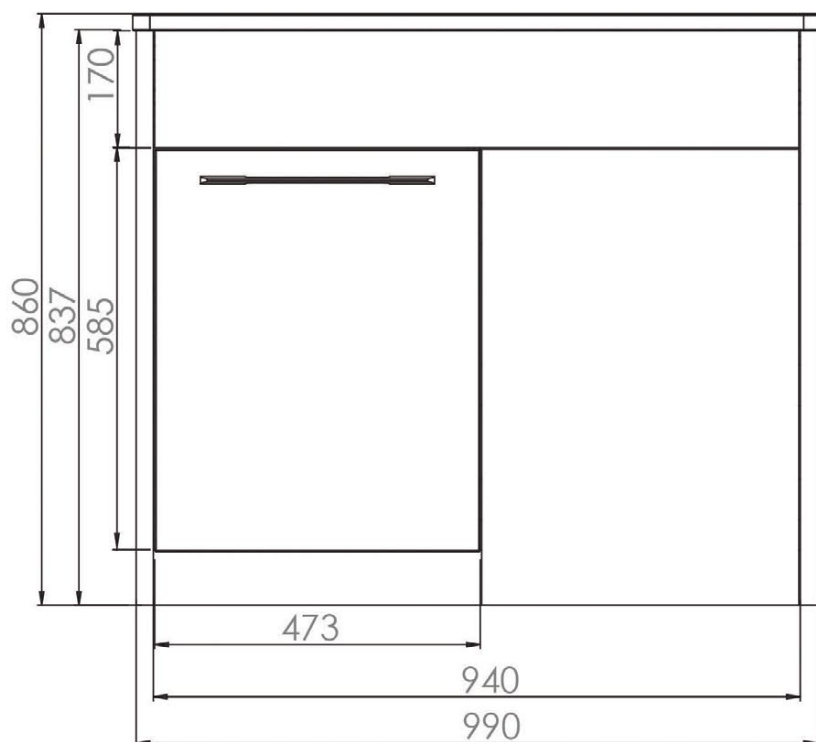


DIAGRAMS NOT TO SCALE
ALL DIMENSIONS IN MM
TOLERANCE OF ± 5 MM

FAQ's

- Is the shelf removable? No.
- Are the door reversible? No, they are hinged on the left hand side.
- How do I attach the column to the wall? There are adjustable hinges at the top and then a lower fixing point **MUST** be used.

No.	Description
1	1000mm Combo Unit
2	1000mm Combo Basin

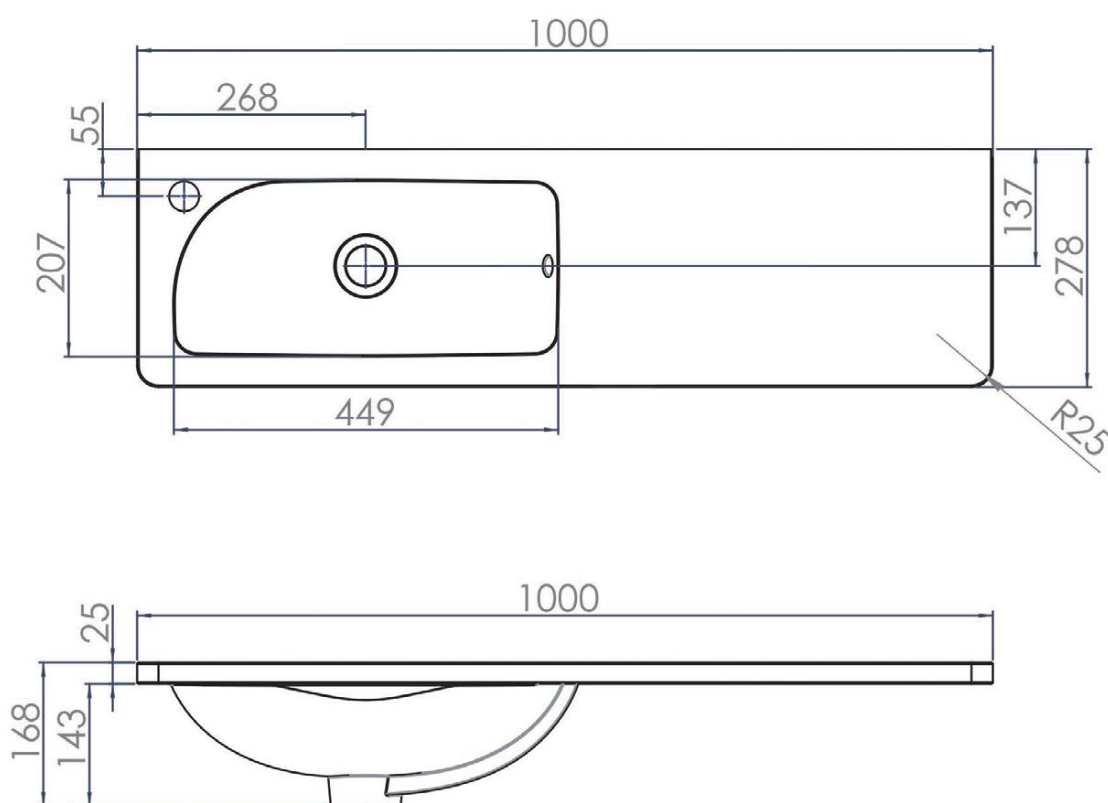


DIAGRAMS NOT TO SCALE
ALL DIMENSIONS IN MM
TOLERANCE OF ± 5 MM

FAQ's

- Are the fascias removable? **Yes – they are on quick release clips**
- Is the BTW fascia removable? **Yes – they are on quick release clips**
- Can a wall hung frame be used inside the BTW unit? **Yes, only half height frame**
- What cistern is suitable sized for this unit? **Non branded product should be checked by installer**
- What flush button can be used with this unit? **All Esteem branded flush buttons are suitable for this unit.**
- Are the hinges soft close? **The hinges are soft close**
- Is the handle included? **Yes, with all required fixings on back brace.**
- How do you fix unit to wall? **Pre-drilled holes can be found on back brace, screws and wall plugs to fix to wall are supplied on back brace.**

No.	Description
1	1000mm Combo Basin



OVERFLOW RATEING:

CE

R2

Brassmill Lane Trading Estate, Bath, BA1 3JF, UK.

18

EN 14688 CL10

DIAGRAMS NOT TO SCALE
ALL DIMENSIONS IN MM
TOLERANCE OF ± 5 MM

FAQ's

- What is the maximum water depth of the basin? 100mm
- Does the basin have an overflow? **Yes, Integrated.**
- What overflow rating does this basin have? CL10