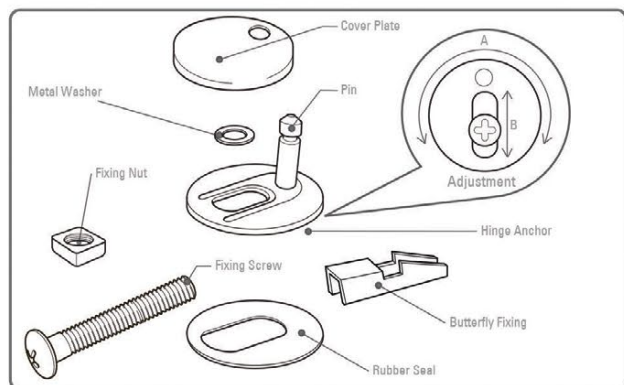


DIAGRAMS NOT TO SCALE
ALL DIMENSIONS IN MM
TOLERANCE OF ± 5 MM

FITTING INSTRUCTIONS

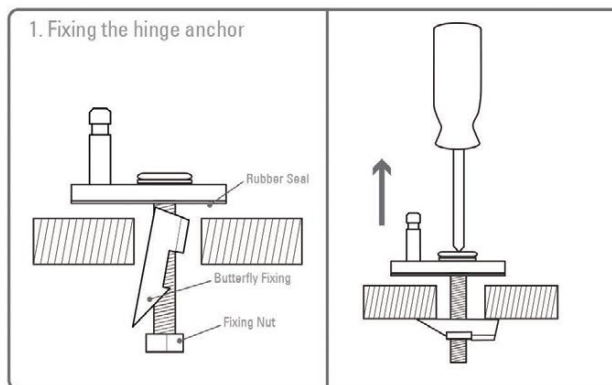
Please retain for future reference

Please read carefully before attempting to fit the seat. If you are not the end user, please make sure the aftercare instructions are made available for the end user to read.

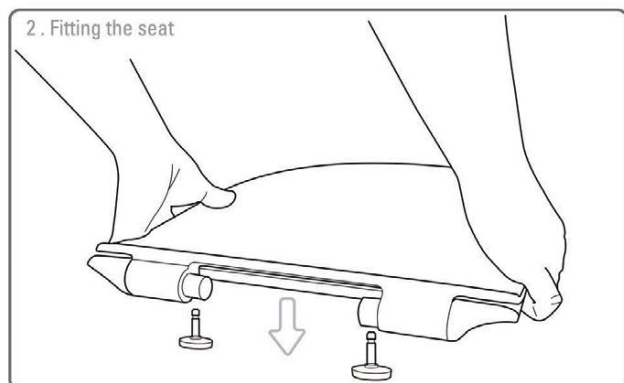


Maximum adjustment of the pin position is achieved by rotating the hinge anchor around the screw (adjustment A in the parts diagram above).

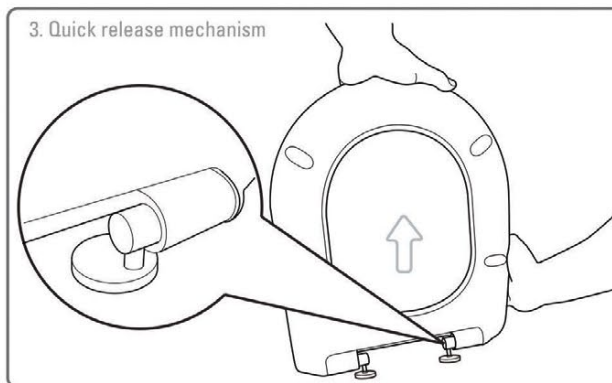
Further fine adjustment of the pin position can be achieved by sliding the screw into the adjustment plate (adjustment B).



Assemble the components as shown, and push the butterfly fixing, fixing nut and fixing screw through the seat fixing holes in the pan. Pull up slightly on the base of the hinge anchor to engage the butterfly clip on the underside of the pan and tighten with a screwdriver to secure the hinge anchor into place.



Align and insert the hinge anchors into the hinges on the seat and firmly press down until the seat is engaged into position. Adjust the hinge anchors to make sure the seat lines up with the edges of the toilet pan. When you are satisfied the seat is in the correct position, remove the seat from the hinge anchors (see step 3) and fully tighten the screw (shown in step 1). Place the cover plates over the hinge anchors. Replace the seat and 'push' into position.



This toilet seat is designed for quick and easy removal when cleaning the toilet pan. To quickly release the seat, lift the lid and seat up to a vertical position. From there, pull the seat firmly from the hinge anchors and remove the seat. To replace the seat align the sockets with the pins and firmly press down until the seat is engaged into position.

AFTERCARE INSTRUCTIONS



Clean surfaces with a soft damp cloth and mild soap solution



Do not scrub or scour



Do not use abrasive cleaning agents



Do not stand on the lid or ring of your toilet seat

IMPORTANT

After a few days check that the fixings are still tight. This is necessary as some components will compress during the first few days.

When using abrasive, corrosive or chlorine-based cleaners for the toilet bowl, ensure that these do not come into contact with the seat. Also keep the seat and cover in an upright position until all cleaner has been flushed away. Failure to do so can lead to discolouration of surfaces or rusting of metal parts which will not be covered by the guarantee.

Periodically check all fixings to ensure none have come loose and re-tighten where necessary. Please take care when handling or moving the toilet seat as careless handling may cause damage or injury. The toilet seat can be dangerous if incorrectly installed. Assembly should be carried out by a competent person. No liability will be accepted for damage or injury caused by incorrect product installation or assembly.

No.	Description
1	Cistern inc. Flush Fitting & Lid
2	Toilet Seat
3	Close Coupled Pan

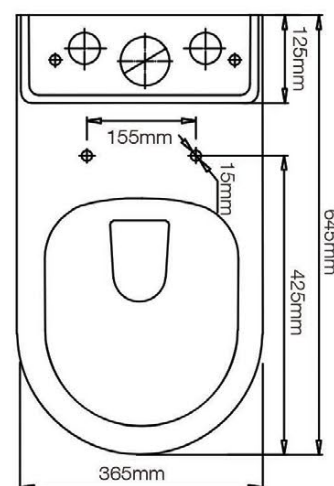
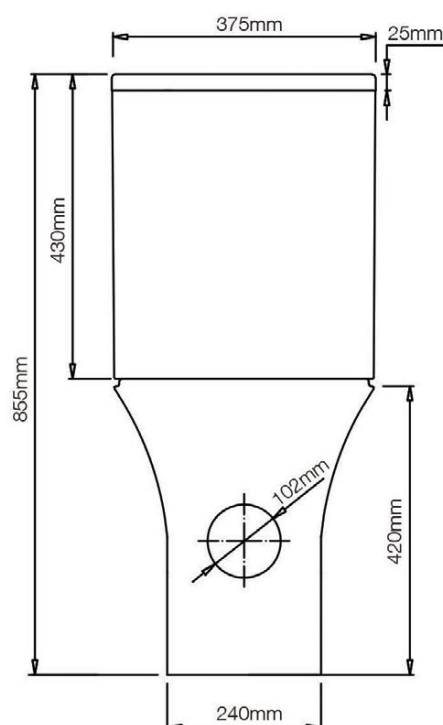
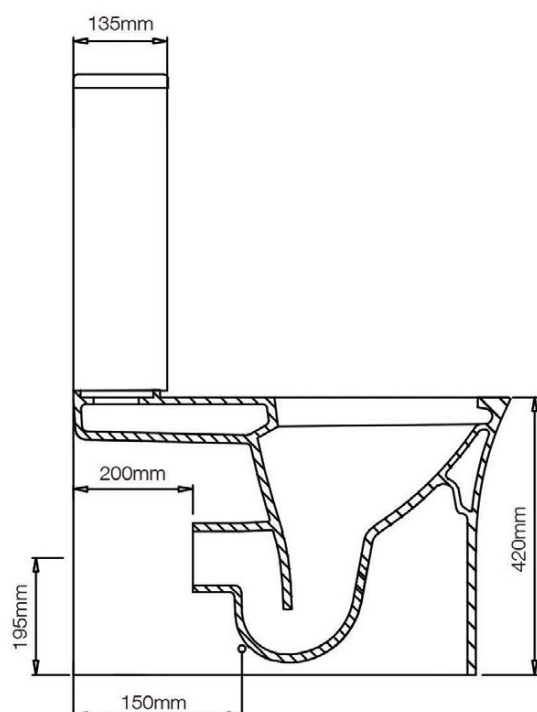
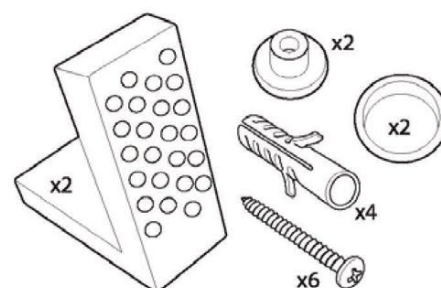


Cistern Settings:

Full Flush Volume: 4.5L

Reduced Flush Volume: 3L

Floor Fixing Kit:



DIAGRAMS NOT TO SCALE
ALL DIMENSIONS IN MM
TOLERANCE OF ± 5 MM

FAQ's

What side is the inlet located? **Left hand side**

Are there any other compatible seats? **No**

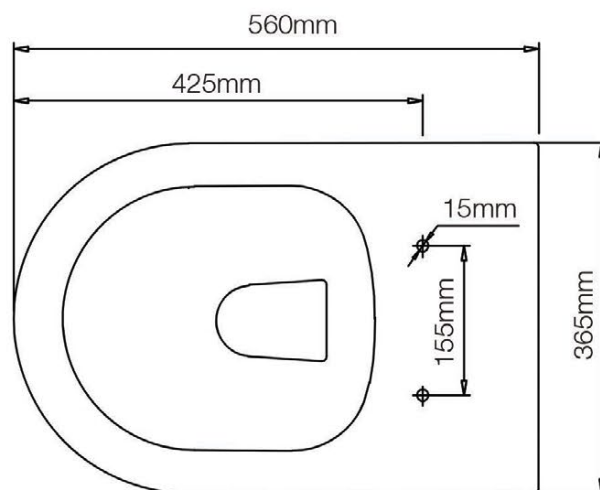
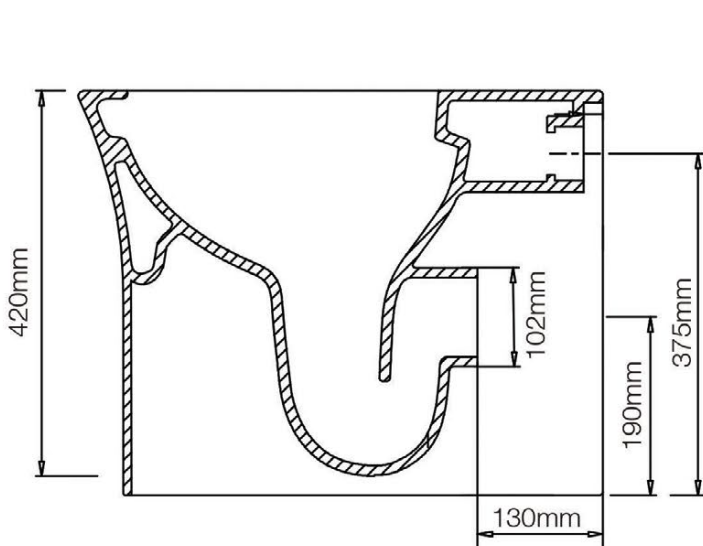
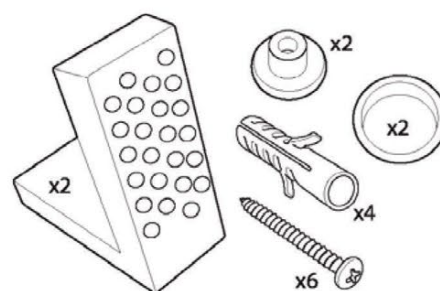
Can this pan be used with a side connection outlet pipe? **No**

The cistern lid won't shut/the cistern isn't working correctly. **Ensure the inlet and flush valves are set to the correct heights.**

No.	Description
1	Toilet Seat
2	Back to Wall Pan



Floor Fixing Kit:



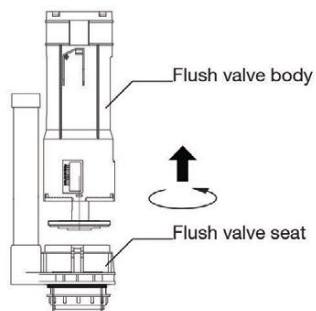
DIAGRAMS NOT TO SCALE
ALL DIMENSIONS IN MM
TOLERANCE OF ± 5 MM

FAQ's

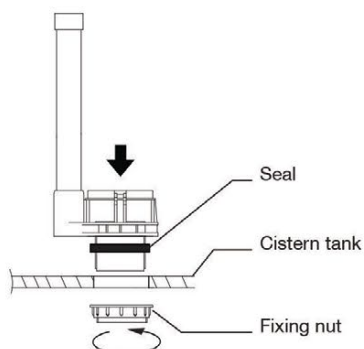
Are there any other compatible seats? **No**

INSTALLATION OF FLUSH VALVE

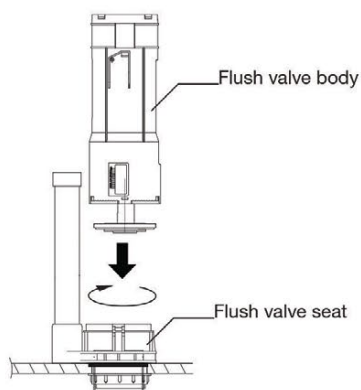
Turn the flush valve body anti-clockwise to part it from the flush valve seat



Install flush valve seat and seal as shown

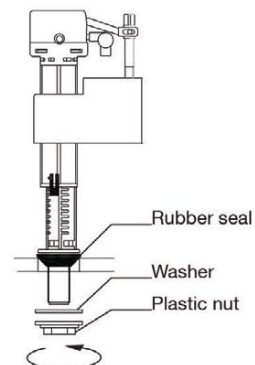


Insert flush valve body into flush valve seat, turn it clockwise until you hear a "click"



INSTALLATION OF FILL VALVE

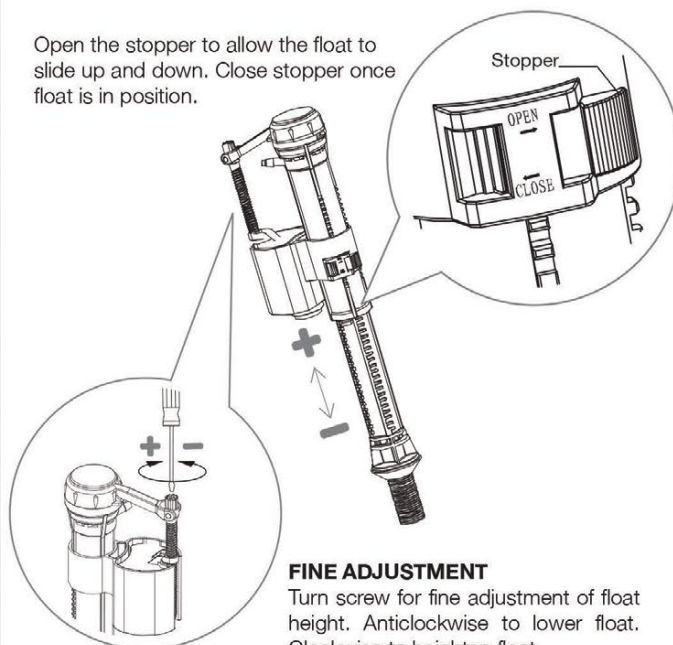
Install the fill valve to the tank body using the rubber seal and plastic nut. Ensure the float cup has room to move up and down freely. The fill valve is pre-set to a height suitable for the cistern tank



FILL VALVE ADJUSTMENT

The fill valve is factory set but if adjustment is required follow the instructions below.

Open the stopper to allow the float to slide up and down. Close stopper once float is in position.

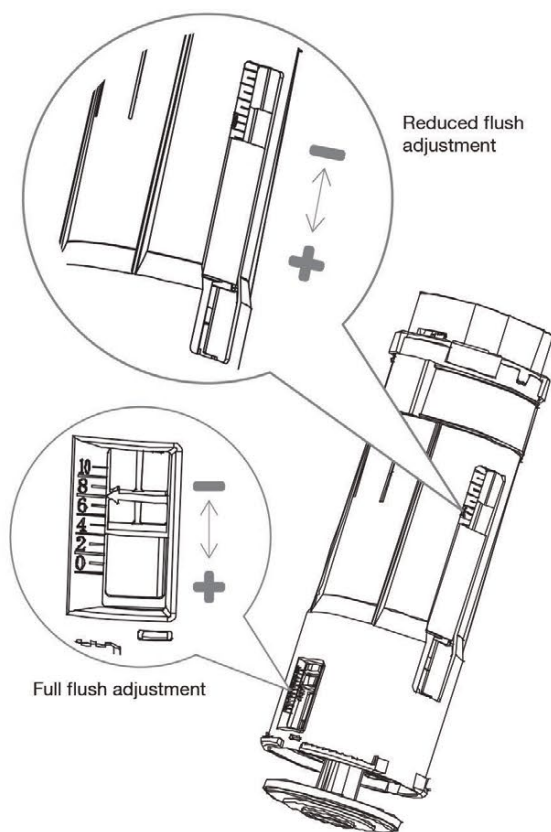


FINE ADJUSTMENT

Turn screw for fine adjustment of float height. Anticlockwise to lower float. Clockwise to heighten float.

FLUSH VALVE ADJUSTMENT

The flush valve is factory set but if adjustment is required see diagram below.



IMPORTANT

Flush out all impurities in the cistern prior to installation.

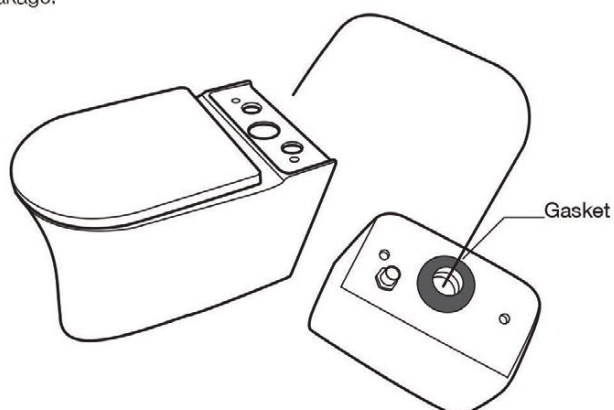
Cistern fittings are suitable for Water pressure: 0.2 - 8 bar

FITTING THE CISTERN TO THE TOILET PAN

With the flush valve and inlet valve fitted and adjusted the cistern tank can be fitted to the pan.

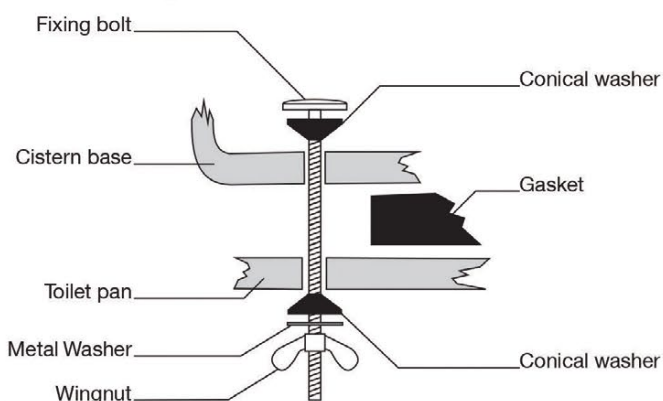
Fit the gasket around the flush valve outlet on the underside of the cistern.

When fitting the cistern to the pan take care to ensure the gasket is properly aligned in the gasket location. Failing to do so could result in leakage.



Insert the cistern fitting bolts arranging the components as shown in the diagram below.

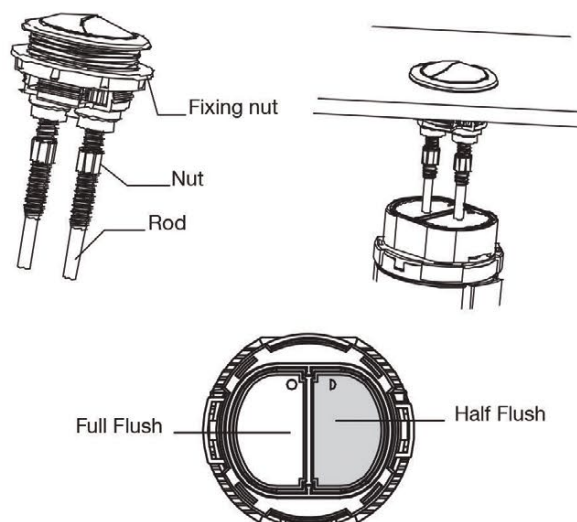
Firmly tighten the nuts and wing nuts taking care not to overtighten as this could damage the ceramic.



INSTALLING PUSH BUTTON

Fit the push button to the cistern lid using the plastic fixing nut.

Ensure the pins make contact with the flush buttons on the flush valve. To adjust the length of the rods turn the nut clockwise and anti-clockwise.



MAKING PLUMBING CONNECTIONS

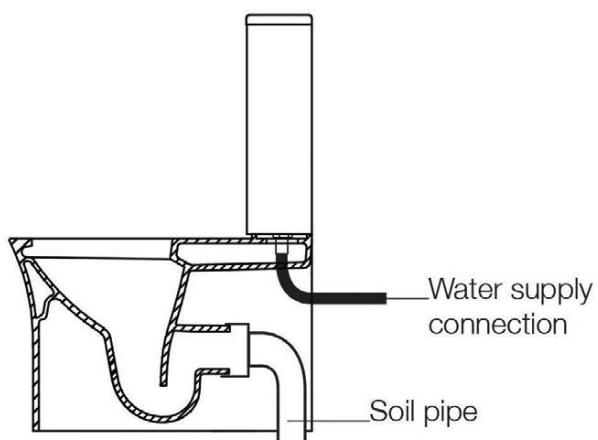
Connect the soil pipe and ensure it is adequately sealed around the toilet pan outlet to prevent leakage.

The inlet valve has a threaded connector. It is recommended that this thread is wrapped in PTFE tape before connecting the water supply.

Do not overtighten the supply to the inlet valve as this could damage the inlet valve causing leakage.

After connecting the water supply to the inlet valve check that the inlet valve components do not touch the internal walls of the cistern and the float can move freely up and down.

Check all connections are secure and a soil pipe is fitted before testing the flush.



OPERATION

Press the large button **once** for a large flush (4.5 litres factory setting)

Press the small button **once** for a small flush (3 litres factory setting)

CARE

DO NOT introduce caustic chemical substances (e.g. containing chlorine compounds or similar). These can damage the valve components and cause failure.